





# TrailBOSS™ / TrailGUIDE BASES

## TrailBOSS CHANNELIZER DRUM HDPE



- HDPE
- Three base options
- Available Plain or with Engineer Grade, Diamond Grade, HI-Intensity, and Prismatic sheeting
- Meets US Standards

ITEM #	DESCRIPTION
03-780	Plain
03-780-4EGG	Engineer Grade 4" Stripes, OWOW
03-780-6EGG	Engineer Grade 6" Stripes, OWOW
03-780-4HIG	HI-Intensity Prismatic 4" Stripes
03-780-6HIG	HI-Intensity Prismatic 6" Stripes
03-780-4FP3M	Diamond Grade 4" Stripes
03-780-6FP3M	Diamond Grade 6" Stripes

## TrailBOSS CHANNELIZER DRUM LDPE



- Three base options
- Available Plain or with Engineer Grade, Diamond Grade, HI-Intensity, and Prismatic sheeting
- Meets US Standards

ITEM #	DESCRIPTION
03-782	Plain
03-782-4EG	4" Engineer Grade 4" Stripes, OWOW
03-782-6EG	6" Diamond Grade 6" Stripes, OWOW
03-782-4HI	4" HI-Intensity Prismatic Stripes
03-782-6HI	6" HI-Intensity Prismatic Stripes
03-782-4FP3M	4" Diamond Grade Stripes
03-782-6FP3M	6" Diamond Grade Stripes

## TrailGUIDE CHANNELIZER DRUM



- Meets NCHRP-350 crash test requirements
- HDPE with UV inhibitors
- Withstands repeated impacts and temperature extremes
- EZ-Grab handle design makes moving and stacking a breeze
- Available with HI-Intensity or Fluorescent Prismatic Sheeting in 4" and 6" configurations
- BLACK approved for use in Ontario and Newfoundland
- ORANGE approved for use in Nova Scotia and Manitoba

ITEM #	DESCRIPTION
03-756-P	Black Plain
03-756-4HIO	Black 4 - 4" HI Fluorescent Orange Stripe (T54,MTO)
03-755-P	Orange Plain / No Sheeting
03-755-6FP	Orange 4-6" Fluorescent Stripes
03-755-QCFP	Orange F1 Prismatic Sheeting (TRVMTQ)



# TrailBOSS™ / TrailGUIDE BASES

## MOLDED RUBBER BASE



- Snaps on to Barrel bottom
- Recycled rubber

<u>ITEM #</u>	<u>DESCRIPTION</u>	<u>FITS</u>
03-732-25	25 lb Base, Round	TrailBOSS
03-732-30	30 lb Base, Round	TrailBOSS
03-732-40	40 lb Base, Round	TrailGUIDE

## TIRE RING BASE



- Tire ring slides over top of Barrel
- Recycled Rubber

<u>ITEM #</u>	<u>DESCRIPTION</u>
03-750-TRG	22.5 lb Tire Ring Base 22" ID
03-732-WR	18 lb Tire Ring Base 16" ID (For use with TrailGUIDE Channelizer Only)







# GRIP N GO™ CHANNELIZERS

## GRIP N GO ORANGE



- Meets MUTCD Standards & NCHRP-350 Certified
- High Visibility Orange
- Molded Hi-Density Polyethylene with UV Color Stabilization
- 49.8" Overall Height, 42" Conical Height, and 7.56" Conical Width at Base

ITEM #	DESCRIPTION
03-750	Plain
03-750-4EGG	4 Ea EGR Stripes OWOW
03-750-4FP	4 Ea 4" DG Stripes OWOW
03-750-4HI	4 Ea 4" HI Stripes
03-750-6EG	4 Ea 6" EGR Stripes OWOW
03-750-6FP	4 Ea 6" DG Stripes WOWO
03-750-6HI	4 Ea 6" HI Stripes
03-750-6HIFP	4 Ea 6" HI Stripes
03-750-64HI	1 Ea 6" & 1 Ea 4" HI Stripes

## EZ GRAB GRIP N GO CHANNELIZER CONES



- NCHRP-350 Certified
- High Visibility
- Molded Hi-Density Polyethylene with UV Color Stabilization
- 49.8" Overall Height, 42" Conical Height, and 7.56" Conical Width at Base
- [SEE PRICE LIST FOR ADDITIONAL OPTIONS](#)

ITEM #	DESCRIPTION
03-750W	White - Plain
03-750Y	Safety Yellow - Plain
03-750B	Blue - Plain

## GRIP N GO BASES



- Recycled Rubber Bases fit Grip N Go and EZ Grab Grip N Go Channelizers

ITEM #	DESCRIPTION
03-752-10	10 lb recycled rubber base for Grip N Go only
03-752-16	16 lb recycled rubber base for Grip N Go only
03-752-30	30 lb recycled rubber base for Grip N Go only



# TRAILBLAZER™ VERTICAL PANELS

## TRAILBLAZER VERTICAL PANEL



- Meets MUTCD Standards
- EG or HI reflective sheeting
- Stackable made from Polyethylene
- Recessed panels protect sheeting
- Easy set up and relocation
- **SEE PRICE LIST FOR ADDITIONAL OPTIONS**

ITEM #	DESCRIPTION
03-760	Plain - no sheeting
03-760-EG	Engineer Sheeting 2 Sides
03-760-HI	HI Prismatic Sheeting

## TRAILBLAZER RESERVED HANDICAP



- Meets MUTCD Standards
- HI Reflective Sheeting
- Stackable made from Polyethylene
- Recessed panels protect sheeting
- Easy set up and relocation
- **SEE PRICE LIST FOR ADDITIONAL OPTIONS**

ITEM #	DESCRIPTION
03-760-WR	White Reserved

## TRAILBLAZER VALET PARKING



- Meets MUTCD Standards
- HI Reflective Sheeting
- Stackable made from Polyethylene
- Recessed panels protect sheeting
- Easy set up and relocation
- **SEE PRICE LIST FOR ADDITIONAL OPTIONS**

ITEM #	DESCRIPTION
03-760-BLKVP	Black Valet Parking

## TRAILBLAZER PEDESTRIAN CROSSING



- Meets MUTCD Standards
- HI Reflective Sheeting
- Stackable made from Polyethylene
- Recessed panels protect sheeting
- Easy set up and relocation
- **SEE PRICE LIST FOR ADDITIONAL OPTIONS**

ITEM #	DESCRIPTION
03-760LIPX	State Law Stop for Pedestrians Within Crosswalk

## VERTICAL PANEL BASE



- Recycled rubber bases

ITEM #	DESCRIPTION
03-760-15	15 lb. 18.5"W x 22"L x 1.3"H
03-760-20	20 lb. 18.5"W x 22"L x 1.3"H
03-760-30	30 lb. 18.5"W x 22"L x 2.6"H

## CUSTOM LEGENDS



- **CUSTOM OPTIONS AVAILABLE**

# STACKER ROUND-TOP CHANNELIZER CONES





# STACKER ROUND-TOP CHANNELIZER CONES

## ORANGE SRTCC



- Meets MUTCD Standards
- HI-Density Polyethylene with UV inhibitors
- Stackable for storage and transport
- Available 36" or 42"
- **SEE PRICE LIST FOR ADDITIONAL OPTIONS**

ITEM #	DESCRIPTION
03-770-36-P	36" Plain
03-770-42-P	42" Plain
03-770-36-64OW	36" w 6"/4" Reflective Collar

## BLUE SRTCC



- Meets MUTCD Standards
- HI-Density Polyethylene with UV inhibitors
- Stackable for storage and transport
- Available 36" or 42"
- **SEE PRICE LIST FOR ADDITIONAL OPTIONS**

ITEM #	DESCRIPTION
03-770-36-B	36" Plain
03-770-42-B-P	42" Plain
03-770-36B64	36" w 6"/4" Reflective Collar

## FLUORESCENT LIME SRTCC



- Meets MUTCD Standards
- HI-Density Polyethylene with UV inhibitors
- Stackable for storage and transport
- Available 36" or 42"
- **SEE PRICE LIST FOR ADDITIONAL OPTIONS**

ITEM #	DESCRIPTION
03-770-36L-P	36" Plain
03-770-42L-P	42" Plain
03-770-36L64	36" w 6"/4" Reflective Collar

## YELLOW SRTCC



- Meets MUTCD Standards
- HI-Density Polyethylene with UV inhibitors
- Stackable for storage and transport
- Available 36" or 42"
- **SEE PRICE LIST FOR ADDITIONAL OPTIONS**

ITEM #	DESCRIPTION
03-770-36Y-P	36" Plain
03-770-42Y-P	42" Plain
03-770-36Y64	36" w 6"/4" Reflective Collar

## CHAINS & PENNANTS



### CHAINS

ITEM #	DESCRIPTION
03-600-27	20'
03-600-28	100'

### PENNANTS

- 9" x 12" on 100' or 60' string
- Tensile strength - 107 lbs
- Standard pack of 25 each
- Available orange, yellow, red, white, alternating red/white, orange/white, or multi.

ITEM #	DESCRIPTION
03-400	100' Red
03-401	100' Red/White
03-402	100' Orange
03-403	100' Multi
03-404	100' Orange/White
03-405	100' Yellow

## SRTCC BASE



- Molded Crumb Rubber Bases
- Quick and easy installation
- 100% recycled and 100% recyclable

ITEM #	DESCRIPTION
03-770-5	10 lb Hexagon Base
03-770-6	15 lb Hexagon Base



# DELINEATOR POSTS







# EZ GRAB™ DELINEATOR

## EZ GRAB DELINEATOR POST KIT



- NCHRP-350 Certified
- Complete kit includes one post and base
- Rubber base is 100% recycled crumb rubber
- Square design adds high friction for improved wind stability
- **SEE PRICE LIST FOR ADDITIONAL OPTIONS**

ITEM #	DESCRIPTION
03-734RBC	Orange Posts w 2-3" Collars & 1-10 lb base
03-747YRBC	Yellow Posts w 2-3" Collars & 1-10 lb base
03-747WRBC	White Posts w 2-3" Collars & 1-10 lb base
03-747BRBC	Blue Posts w 2-3" Collars & 1-0 lb base
03-747LIRBC	Lime Posts w 2-3" Collars & 1-10 lb base
03-747GRBC	Forest Green Posts w 2-3" Collars & 1-10 lb base

## EZ GRAB STROBE DELINEATOR POST KIT



- NCHRP-350 Certified
- 100% Impact resistant Polyethylene
- Portable - easy to move
- UV Inhibitors resist fading
- Two 4" HI reflective recessed bands
- Built-in LED lights provide dual flashing warning of day and night use
- Uses 4 D-Cell Batteries
- Complete kit includes one post and base
- Rubber base is 100% recycled crumb rubber
- Square design adds high friction for improved wind stability

ITEM #	DESCRIPTION
03-739	Orange Flared Post w 2 - 4" HIP Collars & 2 sided orange strobe light
03-739-1	Blue Flared Post w 2 - 4" HIP Collars & 2 sided blue strobe light

## EZ GRAB PERMANENT MOUNT BASE KIT



- High impact plastic post with UV color stabilization
- Reflective collars for 360° visibility
- Heavy duty reinforced plastic bases for rugged durability
- **SEE PRICE LIST FOR ADDITIONAL OPTIONS**

ITEM #	DESCRIPTION
03-746ABC	41" Orange Post (2) 4" Collars & Base w Clamp
03-733-1	Fiberglass Reinforced Plastic Base w Channel Clamp

## EZ GRAB 5 POST CURB BASE SYSTEM KIT



- 100% Recycled 7 ft. rubber base
- Creates a strong visual barrier around hazardous work areas
- Easy to relocate
- Quick and easy set up

ITEM #	DESCRIPTION
03-729-5	5 Orange Posts with Base



# EZ GRAB™ DELINEATOR

## EZ GRAB ORANGE



- 100% Impact resistant Polyethylene
- UV Inhibitors resist fading
- Two 3" or 4" HI reflective recessed bands
- Base sold separately

### ITEM # DESCRIPTION

#### PORTABLE

- 03-740 Plain - no sheeting
- 03-734 Orange w 2-3" HIP Collars
- 03-737 Orange w 2-3" HIP Collars & 2 Amber Reflectors

- 03-747 Orange w 2-4" HIP Collars

#### PERMANENT MOUNT

- 03-735 Orange w 2-4" HIP Collars
- 03-745AB Orange w 2-3" HIP Collars & Base w clamp
- 03-746ABC Orange w 2-4" HIP Collars & Base w clamp

## EZ GRAB WHITE



- 100% Impact resistant Polyethylene
- Portable - easy to move
- UV Inhibitors resist fading
- Two 3" or 4" HI reflective recessed bands
- Base sold separately

### ITEM # DESCRIPTION

#### PORTABLE

- 03-740W Plain - no sheeting
- 03-747W White w 2-3" HIP Collars

#### PERMANENT MOUNT

- 03-735W White w 2-4" HIP Collars
- 03-746WABC White w 2-4" HIP Collars & Base w clamp

## EZ GRAB YELLOW



- 100% Impact resistant Polyethylene
- Portable - easy to move
- UV Inhibitors resist fading
- Two 3" or 4" HI reflective recessed bands
- Base sold separately

### ITEM # DESCRIPTION

#### PORTABLE

- 03-740Y Plain - no sheeting
- 03-747Y Yellow w 2-3" HIP Collars

#### PERMANENT MOUNT

- 03-735Y Yellow w 2-4" HIP Collars
- 03-746YABC Yellow w 2-4" HIP Collars & Base w clamp

## EZ GRAB BLUE



- 100% Impact resistant Polyethylene
- Portable - easy to move
- UV Inhibitors resist fading
- Two 3" or 4" HI reflective recessed bands

### ITEM # DESCRIPTION

#### PORTABLE

- 03-740B Plain - no sheeting
- 03-747B Blue w 2-3" HIP Collars

#### PERMANENT MOUNT

- 03-735B Blue w 2-4" HIP Collars
- 03-746BABC Blue w 2-4" HIP Collars & Base w clamp

## EZ GRAB FOREST GREEN



- 100% Impact resistant Polyethylene
- Portable - easy to move
- UV Inhibitors resist fading
- Two 3" or 4" HI reflective recessed bands
- Base sold separately

### ITEM # DESCRIPTION

#### PORTABLE

- 03-740FG Plain - no sheeting
- 03-747FG Forest Green w 2-3" HIP Collars

#### PERMANENT MOUNT

- 03-735FG Forest Green w 2-4" HIP Collars
- 03-746FGABC Forest Green w 2-4" HIP Collars & Base w clamp

## EZ GRAB LIME



- 100% Impact resistant Polyethylene
- Portable - easy to move
- UV Inhibitors resist fading
- Two 3" or 4" HI reflective recessed bands
- Base sold separately

### ITEM # DESCRIPTION

#### PORTABLE

- 03-740LI Plain - no sheeting
- 03-747LI Lime w 2-3" HIP Collars

#### PERMANENT MOUNT

- 03-735LI Lime w 2-4" HIP Collars
- 03-746LIABC Lime w 2-4" HIP Collars & Base w clamp

## EZ GRAB BLACK



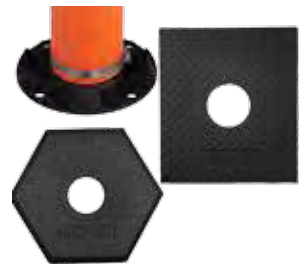
- 100% Impact resistant Polyethylene
- Portable - easy to move
- UV Inhibitors resist fading
- Two 3" or 4" HI reflective recessed bands
- Base sold separately

### ITEM # DESCRIPTION

#### PORTABLE

- 03-747BLK Black w 2-3" HIP Collars

## EZ GRAB BASES



- Fits perfectly in center of EZ Grab handle

### ITEM # DESCRIPTION

- 03-730 10 lb Square Base
- 03-731 15 lb Hex Base
- 03-733-1 Permanent Mount Base



# TUBULAR MARKERS

## TUBULAR MARKER ORANGE



- High performance surface mounted
- Flexible plastic
- Can be bonded to asphalt or concrete
- Easy installation, removal & relocation
- Excellent resistance - rebounds after impact

ITEM #	DESCRIPTION
04-36-OWG	36" Orange with 3" x 6" HI White sheeting
04-48-OWG	48" Orange with 3" x 6" HI White sheeting

## TUBULAR MARKER WHITE



- High performance surface mounted
- Flexible plastic
- Can be bonded to asphalt or concrete
- Easy installation, removal & relocation
- Excellent resistance - rebounds after impact

ITEM #	DESCRIPTION
04-36-WWG	36" White with 3" x 6" HI White sheeting
04-48-WWG	48" White with 3" x 6" HI White sheeting

## TUBULAR MARKER YELLOW



- High performance surface mounted
- Flexible plastic
- Can be bonded to asphalt or concrete
- Easy installation, removal & relocation
- Excellent resistance - rebounds after impact

ITEM #	DESCRIPTION
04-36-YYG	36" Yellow with 3" x 6" HI White sheeting
04-48-YYG	48" Yellow with 3" x 6" HI White sheeting

## TUBULAR MARKER BLACK



- High performance surface mounted
- Flexible plastic
- Can be bonded to asphalt or concrete
- Easy installation, removal & relocation
- Excellent resistance - rebounds after impact

ITEM #	DESCRIPTION
04-36-BWG	36" Black with 3" x 6" HI White sheeting
04-48-BWG	48" Black with 3" x 6" HI White sheeting

## 360° TUBULAR MARKER ORANGE



- 100% Impact resistant Polyurethane
- Permanent Mount
- Post & base included
- Can be bonded to asphalt or concrete
- Excellent resistance - rebounds after impact

ITEM #	DESCRIPTION
04-728	28"
04-736	36"

## 360° TUBULAR MARKER WHITE



- 100% Impact resistant Polyurethane
- Permanent Mount
- Post & base included
- Can be bonded to asphalt or concrete
- Excellent resistance - rebounds after impact

ITEM #	DESCRIPTION
04-728W	28"
04-736W	36"

## 360° TUBULAR MARKER YELLOW



- 100% Impact resistant Polyurethane
- Permanent Mount
- Post & base included
- Can be bonded to asphalt or concrete
- Excellent resistance - rebounds after impact

ITEM #	DESCRIPTION
04-728Y	28"
04-736Y	36"

## TUBULAR MARKER BASES



- 100% Impact resistant Polyurethane

ITEM #	DESCRIPTION
04-10-BASE	Universal Tubular Marker Base





[WWW.CORTINACO.COM](http://WWW.CORTINACO.COM)

UNITED STATES 800.225.5206  
[WORKZONE@CORTINACO.COM](mailto:WORKZONE@CORTINACO.COM)

CANADA 866.757.1900  
[WORKZONECANADA@CORTINACO.COM](mailto:WORKZONECANADA@CORTINACO.COM)

INTERNATIONAL 847.455.2800  
[WORKZONE@CORTINACO.COM](mailto:WORKZONE@CORTINACO.COM) / [WORKZONECANADA@CORTINACO.COM](mailto:WORKZONECANADA@CORTINACO.COM)

© 2017 CORTINA SAFETY PRODUCTS GROUP